

THEWEBSTORE

**Roulette Monitor
Software
User Manual**

2009

INFO@THEWEBSTORE.DE

Contents

1.0	System Requirements	3
2.0	Install and Uninstall	4
3.0	Description	8
4.0	Disclaimer	13

1.0 System Requirements

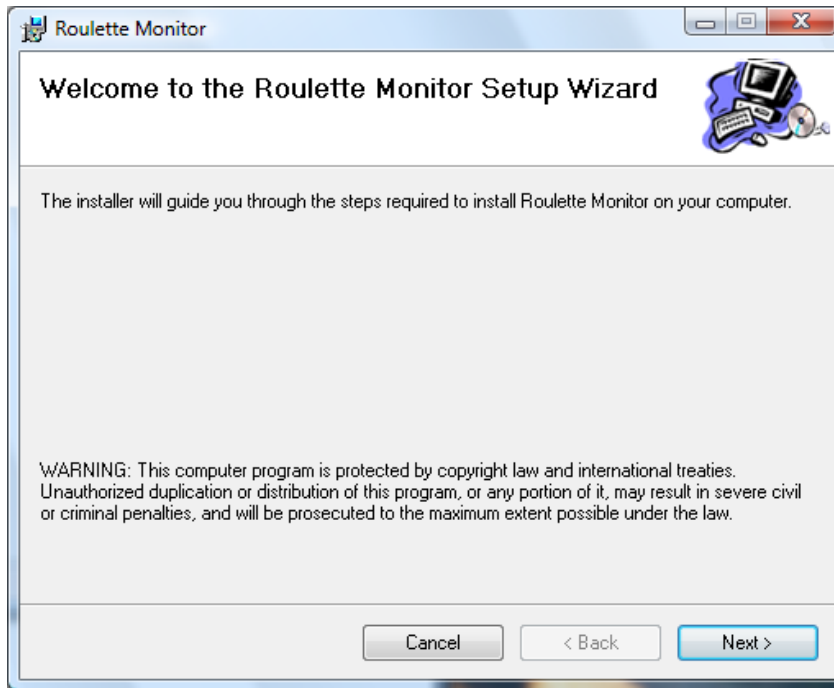
Operating System: Windows 2000
Windows XP
Windows Vista
Windows7
with Microsoft .Net Framework (runtime system) version 2.0 or higher
(Download link for .Net:
<http://www.microsoft.com/downloads/details.aspx?familyid=0856EACB-4362-4B0D-8EDD-AAB15C5E04F5&displaylang=en>)

Graphics: Screen resolution 1024 x 768 or higher

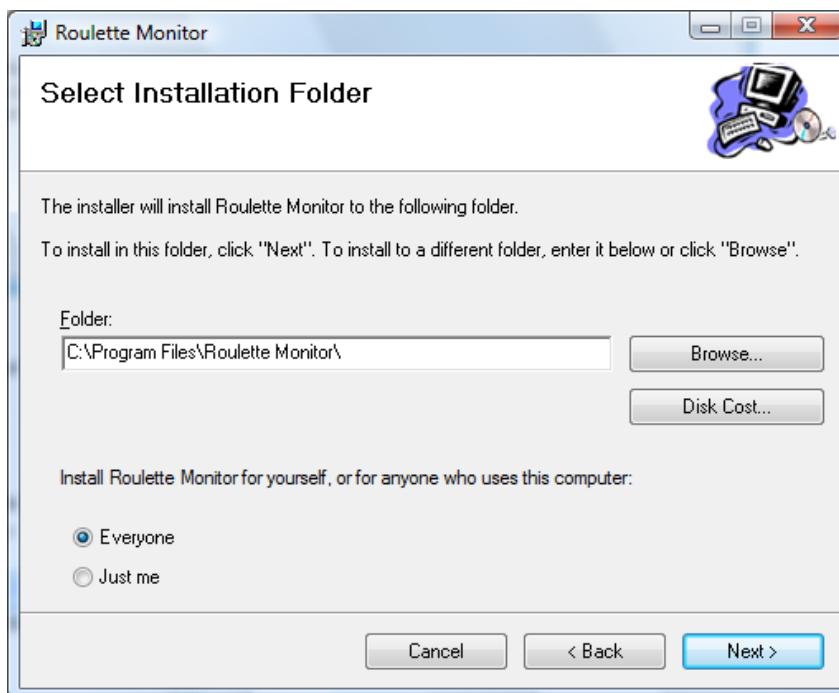
2.0 Install and Uninstall

2.0.1 Installation

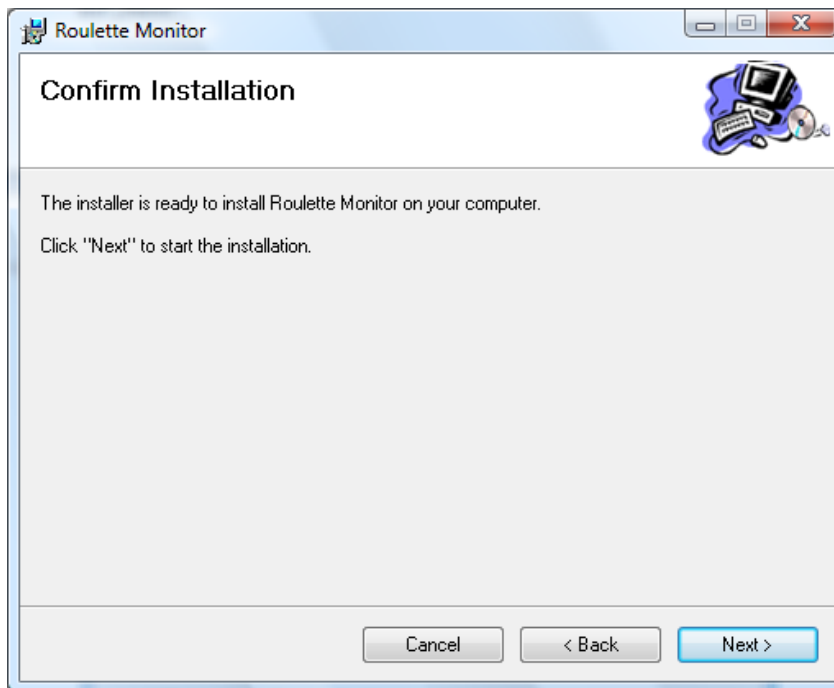
- a) Please save the file "RouletteMonitorSetup.zip" to a folder (e.g. C:\Temp) and unzip it.
- b) Execute RouletteMonitorSetup.msi (Double click or right-click and install)
After running the installation file the following dialog appears:



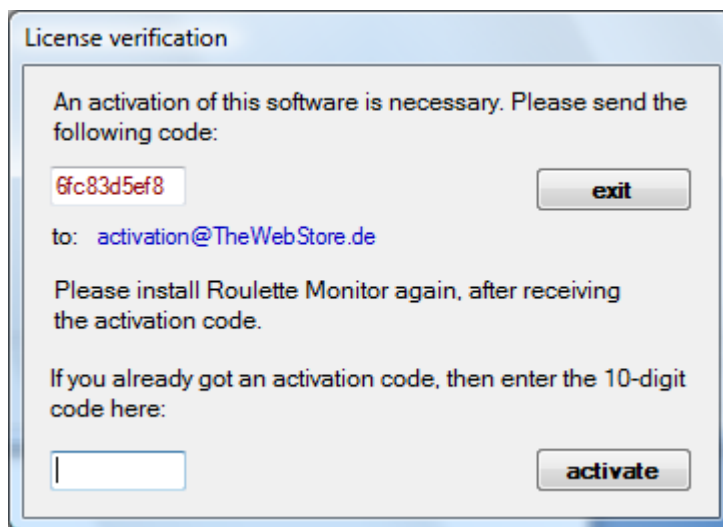
- c) Click „Next“



- d) Please select an installation path or accept the default path by clicking "Next"

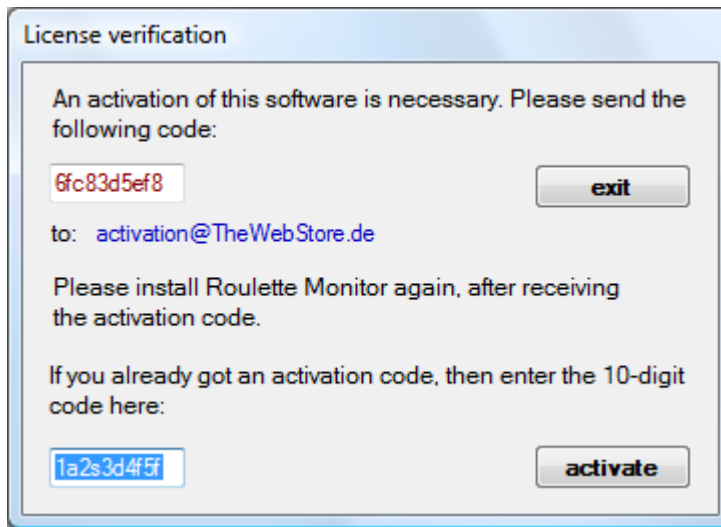


- e) Click „Next“
- f) The software is now installed. After a while you'll get:

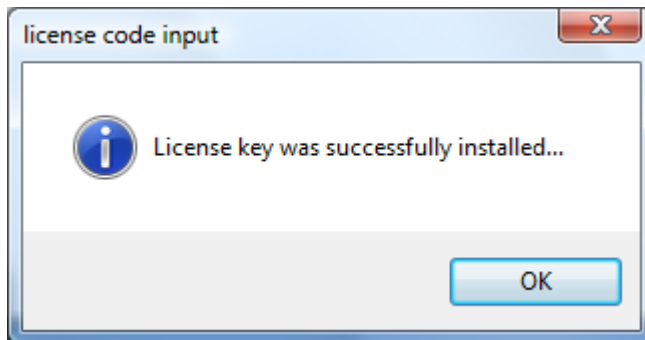


- g) At the top left, an activation code (brown). Please note the brown activation code (in this example: **6fc83d5ef8**) and send to the specified email address: activation@TheWebStore.de.
- h) You can now finish the installation with "exit". Please confirm the next windows with "Next".
- i) Once you have received the license key, please run the installation (steps: a-f) again.

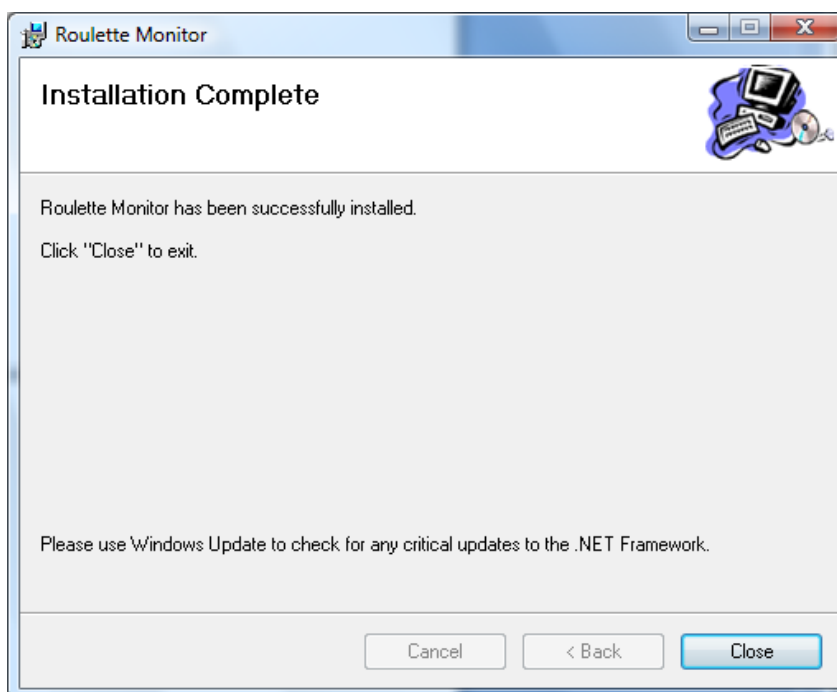
j) Window „License verification“



Enter the license key received via email. (e.g: 1a2s3d4f5f) and click "activate".



k) Click „OK“



l) Complete the installation with "Close". **The software is now ready for use.**

2.0.2 Uninstallation

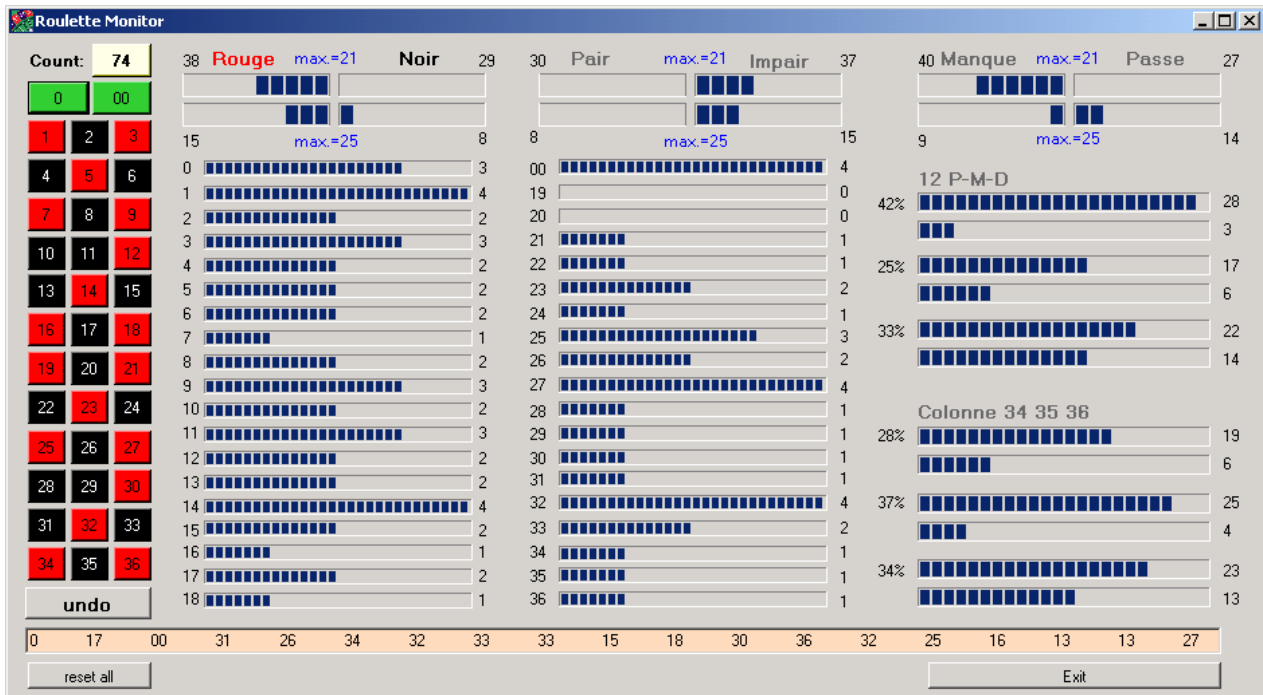
Please navigate to the Control Panel and select software or programs and features. From the list, Please select "Roulette Monitor" and click "Uninstall".

Alternatively, you can uninstall the software by double-clicking the "RouletteMonitorSetup.msi.

3.0 Description

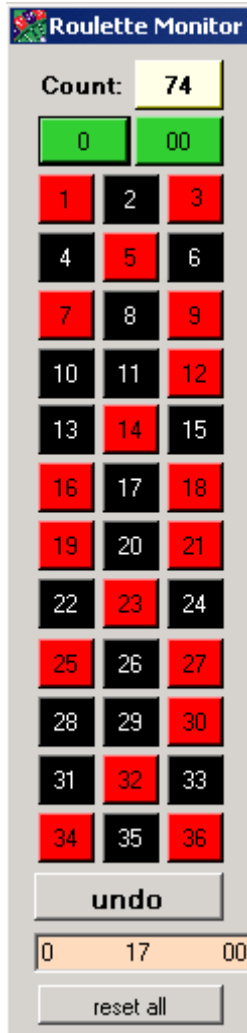
The program is started either by double clicking on Program/Monitor Roulette/Roulette Monitor or using the desktop shortcut.

3.0.0 Complete overview:



3.0.1 Input section:

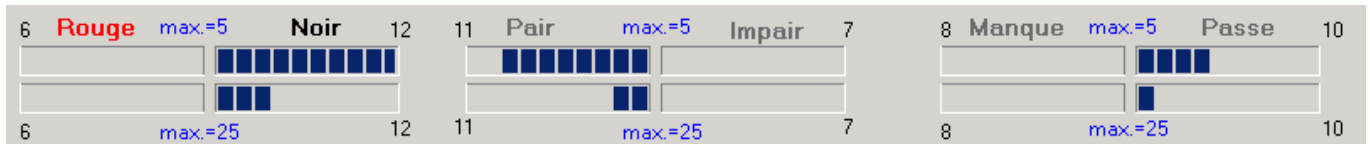
On the left side of the program frame are the input fields. The white field "Count" shows the number of the entered Coups.



With the "undo" button inputs can be undone.

3.0.2 Output section – outside bets (1:1)

The upper part of the program shows the distribution of Simple Chances:
 Rouge (red) und Noir (black),
 Pair (even) und Impair (odd), and
 Manque (1-18) und Passe (19-36).



The upper progress bars show absolute values, thus referring to all the fallen numbers.
 The bottom progress bar shows the relative values. It will be analyzed only the last 25 numbers.
 Blue) in the middle (which are used to calculate maximum values shown (without zero).

Please note that the calculation does not take into account the zero and double-zero. Therefore, the sum of the two progress bar values can be smaller than the number of coups.

3.0.3 Output section – outside bets (2:1)

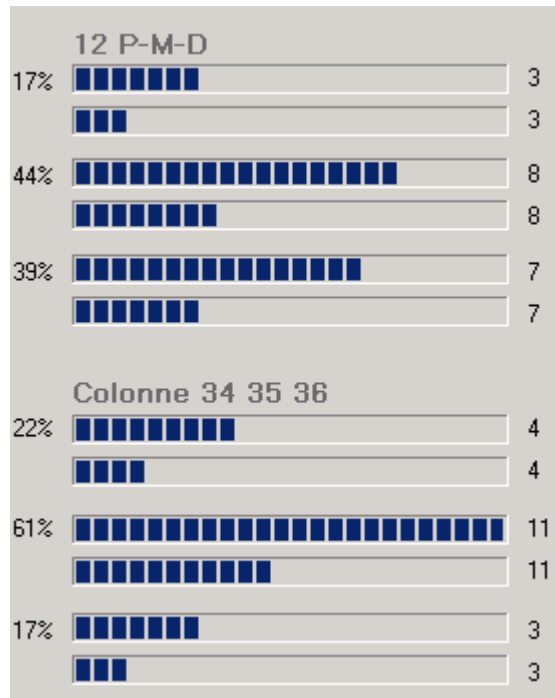
On the right side of the program, the distribution of 2:1 chances is displayed:

Dozen 12 P-M-D bets:

The first (1-12), second (13-24), or third group (25-36) of twelve numbers.

Column 34 35 36 bets:

All 12 numbers on any of the three vertical lines (such as 1-4-7-10 on down to 34).

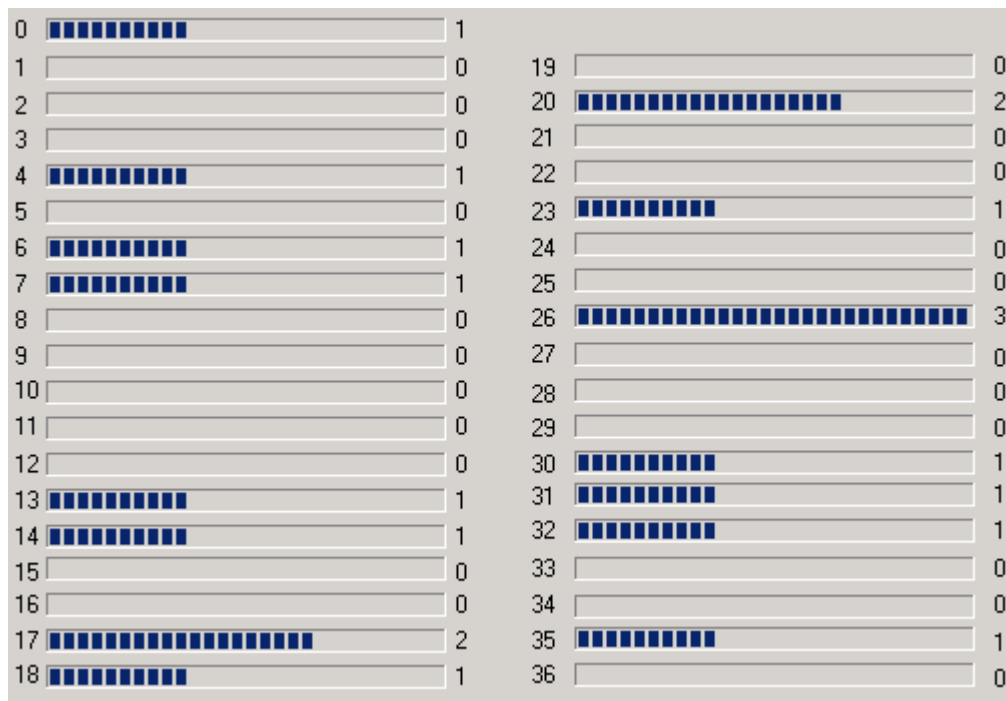


The upper progress bar of the bar pair shows the absolute values, while the lower progress bars the values for the 25 coups displays. On the left of the progress bar pairs, the distribution of frequency is shown in percent.

Please note that the calculation does not take into account the zero and double-zero. Therefore, the sum of the two progress bar values can be smaller than the number of coups.

3.0.4 Output section – inside bets

In the middle of the program, the data of 1-36 and 0 coups (straight-up) are listed.



On the right side of each progress bar the number of the coups is counted. The most fallen coups, is portrayed as full scale.

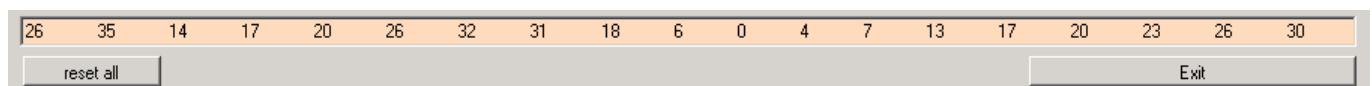
e.g.

1 is fallen 10 times, 10 times the maximum value, the progress bar is shown full scale (100%)

10 is fallen 3 times, the progress bar shows about 30% deflection

30 is fallen 7 times, the progress bar indicates an approximately 70%

3.0.5 Treadmill display, reset and Exit Button



The lower part of the program shows a treadmill with the last 20 coups. Any new set enter left and moves to right.

With the button "reset all" the program will reset all to zero. All typed data is deleted.

With the "exit" button, the program is terminated. All entered values are lost. On the next start, the program starts again virgin.

4.0 Disclaimer

The available Roulette Monitor software does not guarantee accuracy, or lays claim to validity. Their use is entirely at your own risk. TheWebStore.de assumes no liability for damages resulting from the use of the software or their faulty functions.